
Catalog

January 2012

Pricing subject to change

RF  **Signs.com**
Protecting people. Protecting your business

The One Stop Shop for RF Safety Signs and Sign Mounting Hardware

RFSigns.com
A Division of Isotrope, LLC.

505 Main Street
Medfield, MA 02052

Phone: 508-359-8833
www.rfsigns.com

About RFSigns.com

RFSigns is the brainchild of Isotrope, LLC co-founder David Maxson. David has been providing RF exposure management services for over twenty years. With such long and varied experience with broadcasting and wireless facility safety management, it finally dawned on him that there was no one more experienced or more qualified to develop a family of ANSI-compliant signs.

Co-owner Steve Riggs has 3 decades of experience managing and maintaining broadcast facilities. He brings practical day to day experience to RF Safety management. Steve's been there, out at the tower fence on a cold day, trying to figure out where to put the sign, and how to mount it.

RFSigns' mission is to provide the radio industry with the best, most effective, standards-compliant RF safety communication tools.

Check the RFSigns.com website for the latest information on products and pricing.

RF Signs are an important part of a complete RF exposure management program that includes site assessment, proper signage, realistic access control, worker training, written procedures, and the availability of personal protective equipment (PPE) as needed.

Table of Contents

Guarantee	4
Shipping Policy	4
Sign Placement	5
Notice Signs	7
Caution Signs	8
Warning Signs	11
Danger Signs	12
ASR Signs	13
Custom Signs	13
Sign Mounting Hardware	14
Custom ANSI Signs	17
Custom ANSI Decals	17
Bilingual Signs	8, 10, 11, 12
Short Form Catalog	18-20

Company Policies

Guarantee

One year 100% satisfaction guarantee. Return the sign for product replacement or money back. (Contact RFSigns.com for return authorization.)

Shipping

It is vital that you provide us with the correct shipping information. We will hold you responsible for all additional shipping charges including a handling fee should you provide us with incorrect information. Shipping policy subject to change, please check website for the latest.

48 Contiguous States:

Standard shipping is via UPS.

Orders under \$100: \$10

Orders over \$100: Free Shipping

Alaska, Hawaii, and US territories:

Shipped Via USPS Priority Mail. We will contact you with shipping charges.

Express Shipments:

Express shipments are available at shipping cost plus a \$15 handling fee. (For express shipments, please email us and let us know how quickly you need your signs: [email RFSigns](mailto:email@RFSigns.com). We will contact you via email to arrange payment for shipment.)

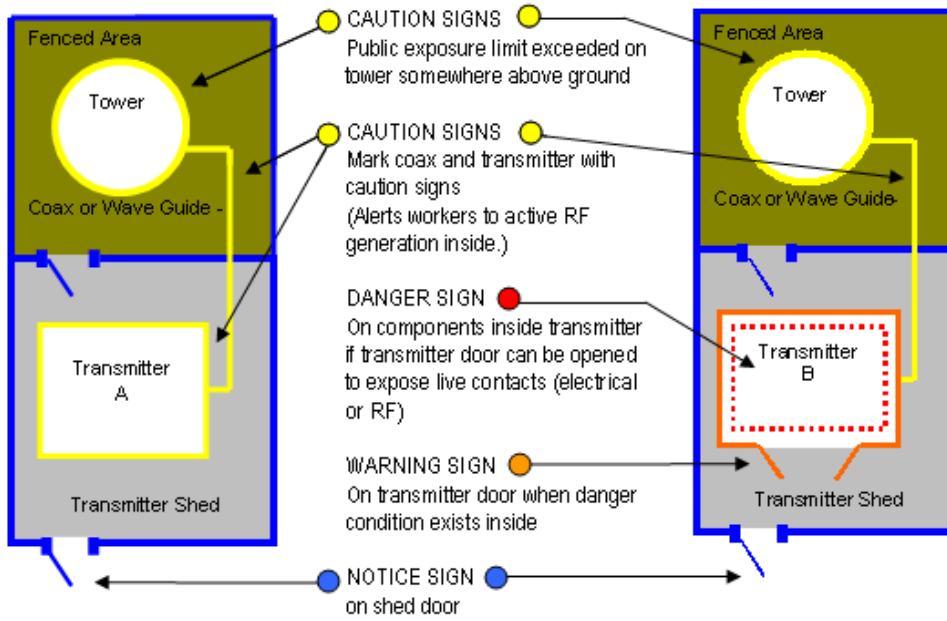
Pricing

Pricing is subject to change without notice. Check website for current pricing.

Sign Placement using RFSigns Envelope Method™

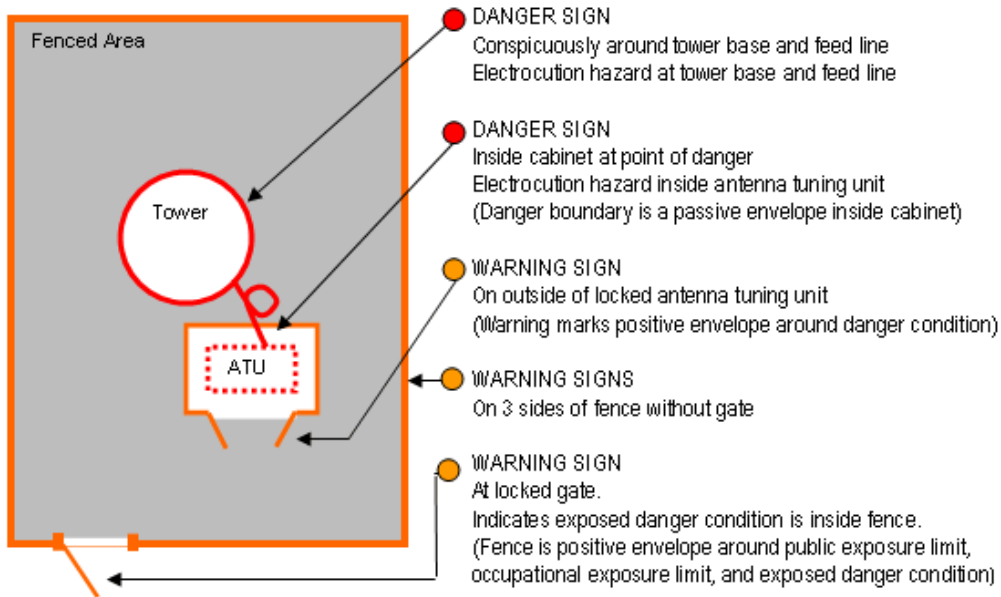
FM, TV, or Wireless Building with Tower

When all exposure levels at ground are within public exposure limits



KEY	
—	Positive Envelope
....	Passive Envelope

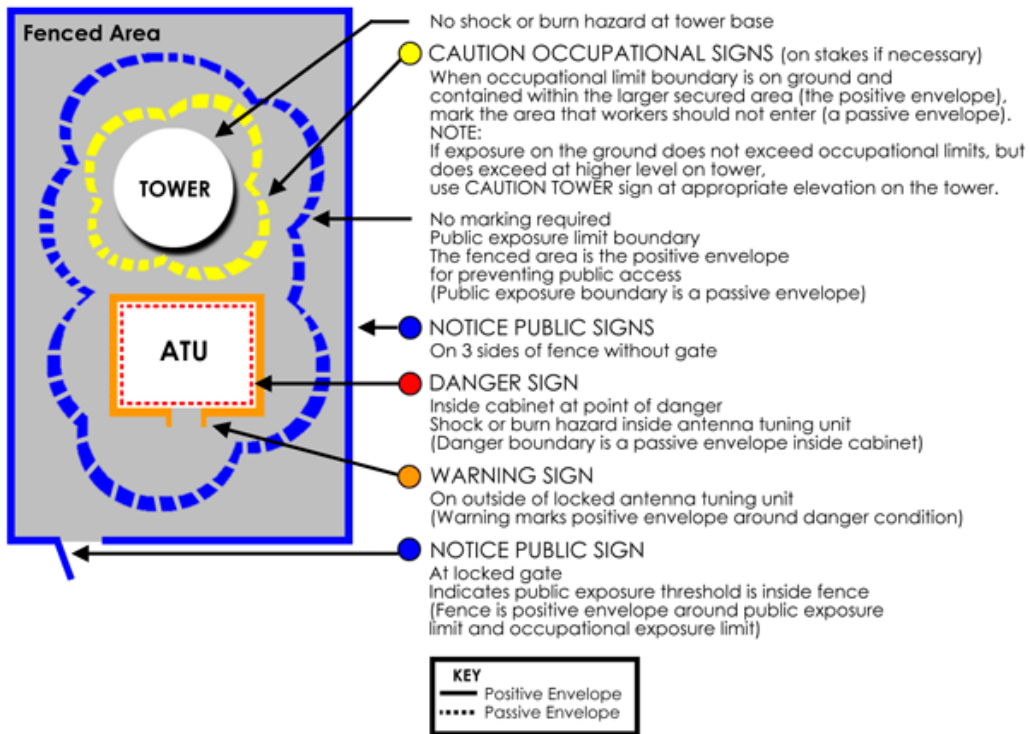
AM Broadcasting Tower with **Base Potential**



KEY	
—	Positive Envelope
----	Passive Envelope

AM Broadcasting Tower without Base Potential

Grounded Base - No High Voltage at Base
 (Assumes feed line is not exposed and presents no danger)



Notice Public



Description

English Public Threshold RF Notice: Use this 14" x 10" sign to inform people that it is possible to exceed the public exposure threshold within the envelope of the sign. [RFSigns Envelope Method™](#) identifies the secure area around a space that contains an exposure threshold. This secure area is the envelope for that threshold exposure potential. Entrances and points of access to the envelope should be marked with the appropriate hazard level (Notice/Caution/Warning/Danger) Use sign NP002 to indicate areas that have transmitters but do not exceed public exposure limit.

Features

RFSigns are .040 aluminum with white background finish on front and back. Outdoor inks are further protected with a UV coating to ensure a long life under extreme conditions. RFSigns have pre-drilled holes in all 4 corners. Corners have radius edges.

Part #: NP001

List: \$25.99

Notice (English/Español)



Description

Use this bilingual 10" x 14" RF Notice sign to inform people of the presence of active transmitters. Not to be used when the public exposure threshold is present.

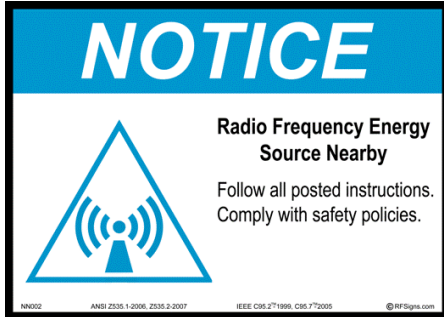
Features

RFSigns are .040 aluminum with white background finish on front and back. Outdoor inks are further protected with a UV coating to ensure a long life under extreme conditions. RFSigns have pre-drilled holes in all 4 corners. Corners have radius edges.

Part #: NN202

List: \$25.99

Notice



Description

Use this 14" x 10" RF Notice sign to inform people of the presence of active transmitters. Not to be used when the public exposure threshold is present. Use sign NP001 to indicate areas that exceed public exposure limit.

Features

RFSigns are .040 aluminum with white background finish on front and back. Outdoor inks are further protected with a UV coating to ensure a long life under extreme conditions. RFSigns have pre-drilled holes in all 4 corners. Corners have radius edges.

Part #: NN002

List: \$25.99

Caution Occupational



Description

Use this 14" x 10" RF Caution sign to inform people that it is possible to exceed the occupational exposure threshold within the envelope of the sign. "RFSigns' Envelope Method™ identifies the secure area around a space that contains an exposure threshold. This secure area is the envelope for that threshold exposure potential. Entrances and points of access to the envelope should be marked with the appropriate hazard level (Notice/Caution/Warning/Danger).

Features

RFSigns are .040 aluminum with white background finish on front and back. Outdoor inks are further protected with a UV coating to ensure a long life under extreme conditions. RFSigns have pre-drilled holes in all 4 corners. Corners have radius edges.

Part #: C0002

List: \$25.99

Caution Occupational (English/Español)



Part #: C0201

List: \$25.99

Description

Use this bilingual 10" x 14" RF Caution sign to inform people that it is possible to exceed the occupational exposure threshold within the envelope of the sign. "RFSigns' Envelope Method™ identifies the secure area around a space that contains an exposure threshold. This secure area is the envelope for that threshold exposure potential. Entrances and points of access to the envelope should be marked with the appropriate hazard level (Notice/Caution/Warning/Danger).

Features

RFSigns are .040 aluminum with white background finish on front and back. Outdoor inks are further protected with a UV coating to ensure a long life under extreme conditions. RFSigns have pre-drilled holes in all 4 corners. Corners have radius edges.

Caution Tower



Part #: CT001

List: \$25.99

Description

Use this 14" x 10" RF Caution sign to inform people that it is possible to exceed the occupational exposure threshold somewhere above where the sign is posted on the tower.

Features

RFSigns are .040 aluminum with white background finish on front and back. Outdoor inks are further protected with a UV coating to ensure a long life under extreme conditions. RFSigns have pre-drilled holes in all 4 corners. Corners have radius edges.

Warning



Description

Use this 14" x 10" RF warning sign to warn that there is imminent risk of serious injury of death within the envelope controlled by the sign. Generally, when there is exposed RF circuitry inside, such as a live AM tower or exposed AM tuning units or conductors, the Warning should go outside (such as on a fence or tower doghouse). When a Warning sign is required outside, a Danger sign is required inside - see DN002.

Features

RFSigns are .040 aluminum with white background finish on front and back. Outdoor inks are further protected with a UV coating to ensure a long life under extreme conditions. RFSigns have pre-drilled holes in all 4 corners. Corners have radius edges.

Part #: WN002

List: \$25.99

Warning (English/Español)



Description

Use this bilingual 10" x 14" RF warning sign to warn that there is imminent risk of serious injury of death within the envelope controlled by the sign. Generally, when there is exposed RF circuitry inside, such as a live AM tower or exposed AM tuning units or conductors, the Warning should go outside (such as on a fence or tower doghouse). When a Warning sign is required outside, a Danger sign is required inside - see DN202.

Features

RFSigns are .040 aluminum with white background finish on front and back. Outdoor inks are further protected with a UV coating to ensure a long life under extreme conditions. RFSigns have pre-drilled holes in all 4 corners. Corners have radius edges.

Part #: WN202

List: \$25.99

Danger

Description



This 14" x 10" RF Danger sign is for placement where there is an imminent risk of serious injury or death. When an exposure (in an RF environment) could knock an individual down, cause a serious shock or burn, or even death, RFSigns.com recommends this Danger sign with a standard shock hazard symbol to get the point across quickly. The standard Do Not Touch symbol does not convey the urgency of the hazard of human contact with exposed RF conductors.

Danger signs should be posted at the actual location of the hazard.

Part #: DN002

List: \$25.99

Features

RFSigns are .040 aluminum with white background finish on front and back. Outdoor inks are further protected with a UV coating to ensure a long life under extreme conditions. RFSigns have pre-drilled holes in all 4 corners. Corners have radius edges.

Danger (English/Español)

Description



This bilingual 10" x 14" RF Danger sign is for placement where there is an imminent risk of serious injury or death. When an exposure (in an RF environment) could knock an individual down, cause a serious shock or burn, or even death, RFSigns.com recommends this Danger sign with a standard shock hazard symbol to get the point across quickly. The standard Do Not Touch symbol does not convey the urgency of the hazard of human contact with exposed RF conductors.

Danger signs should be posted at the actual location of the hazard.

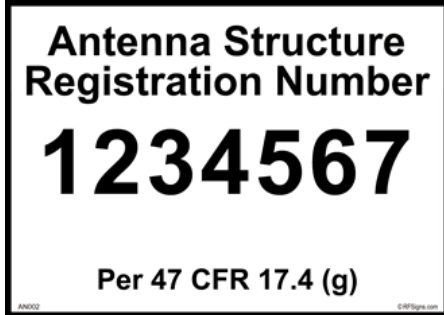
Features

RFSigns are .040 aluminum with white background finish on front and back. Outdoor inks are further protected with a UV coating to ensure a long life under extreme conditions. RFSigns have pre-drilled holes in all 4 corners. Corners have radius edges.

Part #: DN202

List: \$25.99

Antenna Structure Registration



Description

Required for certain tower structures by the FAA and FCC, this is also known as a Tower Registration sign. No assembly required. We start with a 14" x 10" pre-printed UV resistant sign and then apply a decal with the numerals. The registration numbers are 2.25 inches tall. Our decals have the following features:

- made from polyester for longevity
 - printed using black, UV and scratch resistant ink
 - manufactured using high durability acrylic adhesive
- Provide your ASR number (ASRN) or numbers with order.

Part #: AN002

List: \$45

Order Custom Sign



Description

Create your own custom 14" x 10" RF Sign. Examples: – Emergency contact information – Company name – Special instructions. See more examples at RFSigns.com website.

Text is in Black. We start with a pre-printed UV resistant sign and then apply a 3' x 12" decal (or decals) with the text. Our decals have the following features:

- made from polyester for longevity
- printed using black, UV and scratch resistant ink
- manufactured using high durability acrylic adhesive

To order: Select "Order Custom Sign" and then describe design in "Design" box when you add to cart.

Part #: CUSTOM

List: \$45

Sign Guardian™ Standard Package (2 pcs)



Description

Safely and easily attach signs to standard 2" chain link fence. Can be installed on the sign side of the fence, reducing installation time. No need to get to the other side! Includes 1" tamper resistant "1-Way-R Bolt". **Installs with standard screwdrivers.**

In most situations we recommend 2 Sign Guardians per sign. In high wind areas, 4 Sign Guardians are recommended. Available in bulk quantities, contact RFSigns.com for more information.

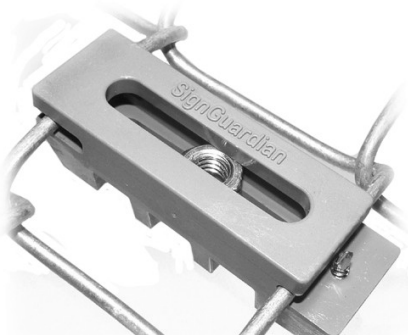
Features

Sign Guardian is manufactured out of heavy duty Nylon 6/6 material. Bolt and nut are made from Low Carbon Steel Zinc Alloy. Sign Guardian has vertical and horizontal travel to connect holes more easily. Sign Guardian meets the UL (1565), and CSA (C22.2) safety standards in both the U.S. and Canada, as well as U.S. Military (Mil-S-23190) standards.

Part #: SG001

List: \$5.99

Sign Guardian™ High Wind Package (4 pcs)



Description

Safely and easily attach signs to standard 2" chain link fence. Can be installed on the sign side of the fence, reducing installation time. No need to get to the other side! Includes 1" tamper resistant "1-Way-R Bolt". **Installs with standard screwdrivers.**

In most situations we recommend 2 Sign Guardians per sign. In high wind areas, 4 Sign Guardians are recommended. Available in bulk quantities, contact RFSigns.com for more information

Features

Sign Guardian is manufactured out of heavy duty Nylon 6/6 material. Bolt and nut are made from Low Carbon Steel Zinc Alloy. Sign Guardian has vertical and horizontal travel to connect holes more easily. Sign Guardian meets the UL (1565), and CSA (C22.2) safety standards in both the U.S. and Canada, as well as U.S. Military (Mil-S-23190) standards.

Part #: SG002

List: \$11.99

Sign Guardian™ Bolt Removal Bit



Description

While you can tighten the Sign Guardian bolt using a flat blade screwdriver, you will need this special screwdriver bit in order to loosen the tamper resistant bolt.

Included for free with orders of 10 or more of any of our Sign Guardian products.

Part #: SG003

List: \$2.00

1-Way R™ 1 inch Screw (bags of 5)



Description

Our 1/4-10 x 1" screws feature a tamper resistant Head. Use a standard flat blade screwdriver to screw in. You will need a special removal bit (sold separately) to remove the screw. Perfect for mounting our signs to wood or metal.

Since it's a TYPE A screw you can use it with drilled, punched or nested holes in sheet metal .015 to .050 thick, and they're great to use in wood.

Features

Screws are manufactured from zinc plated hardened steel.

Sold in Bags of 5.

Part #: SW001

List: \$2.49

Sign Guardian™ Pole Clamp 2-3/8" (bag of 2)



Part #: SC001

List: \$15.99

Description

To mount signs on gates, pipes or poles, we now offer our **Pole Clamp**, with tamper resistant recessed nuts and equipped with a **1-Way R™ Bolt!**

This clamp works with 2-3/8" pipe.

Features

The Pole Clamp is made from Zinc for the body, (prevents rust), and standard coated steel for the u-bolt.

Sign Guardian™ Pole Clamp 2-7/8" (bag of 2)



Part #: SC002

List: \$17.99

Description

To mount signs on gates, pipes or poles, we now offer our **Pole Clamp**, with tamper resistant recessed nuts and equipped with a **1-Way R™ Bolt!**

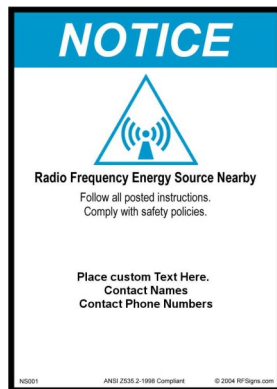
This clamp works with 2-7/8" pipe.

Features

The Pole Clamp is made from Zinc for the body, (prevents rust), and standard coated steel for the u-bolt.

Custom ANSI Compliant Signs

In addition to our Custom vinyl lettered signs, RF Signs can also design ANSI/OSHA compliant signs. RF Signs will work with you to design a sign that will fit your needs and be standards compliant. There is a minimum order of 250 signs per design. Please contact RF Signs for more details. These custom signs have all our standard features: .040 aluminum, UV resistant inks, overall UV resistant covering, radius cor-



Custom ANSI Compliant Decals

Many of our RF safety signs are also available as 3"x5" RF safety decals. We can change the wording on decals to customer requirements. Our decals are:

- Approximately 3x5-inch
- Made from polyester for longevity
- printed using UV resistant & scratch resistant ink
- manufactured using high durability acrylic adhesive.

There is a \$350 setup charge (includes consultation with client for safety distance calculation, decal design and position recommendation). Setup fee waived for re-orders of same design.

Minimum order: Custom decals: 50 count

Stock decals/signs (mixed orders OK): \$25

Please Contact RFSigns for more information



Notice Public

Part #: NP001

List: \$25.99



Notice (English/Español)

Part #: NN202

List: \$25.99



Notice

Part #: NN002

List: \$25.99



Caution Occupational

Part #: C0002

List: \$25.99



Caution Occupational (English/Español)

Part #: C0201

List: \$25.99



Caution Tower

Part #: CT001

List: \$25.99



Warning

Part #: WN002

List: \$25.99



Warning (English/Español)

Part #: WN202

List: \$25.99



Danger

Part #: DN002

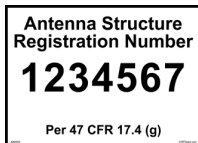
List: \$25.99



Danger (English/Español)

Part #: DN202

List: \$25.99



Antenna Structure Registration

Part #: AN002

List: \$45

Order Custom Sign

Part #: CUSTOM

List: \$45



Sign Guardian™ Standard Package (2 pcs)

Part #: SG001

List: \$5.99



Sign Guardian™ High Wind Package (4 pcs)

Part #: SG002

List: \$11.99



Sign Guardian Bolt Removal Bit

Part #: SG003

List: \$2



1-Way R™ 1 inch Screw (bags of 5)

Part #: SW001

List: \$2.49



Sign Guardian™ Pole Clamp 2-3/8" (bag of 2)

Part #: SC001

List: \$15.99



Sign Guardian™ Pole Clamp 2-3/8" (bag of 2)

Part #: SC002

List: \$17.99



RFSigns.com

505 Main Street
Medfield, MA 02052

Phone: 508-359-8833
www.rfsigns.com

RFSigns.com